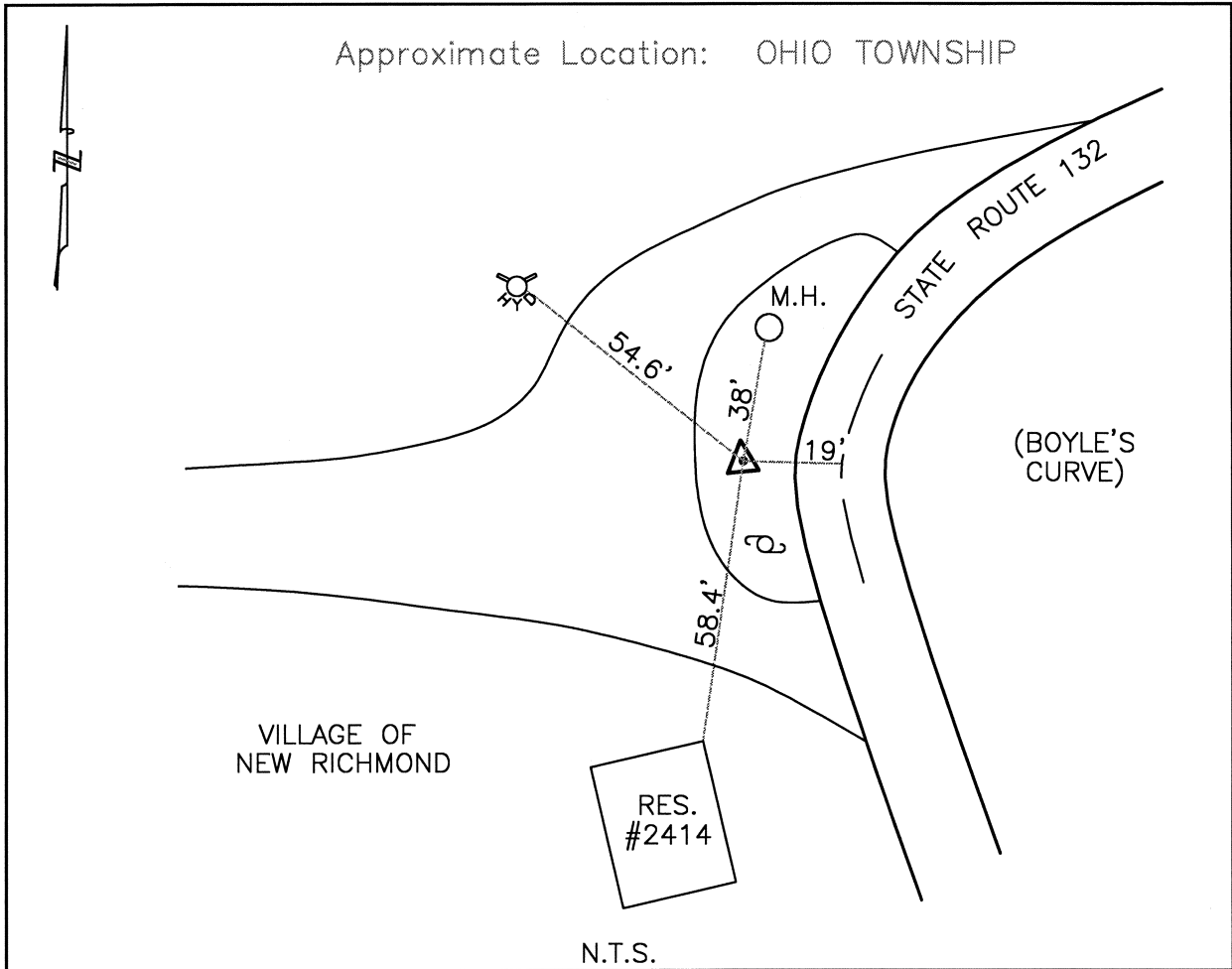




CLERMONT COUNTY ENGINEER CONTROL STATION DATA SHEET



Station Name: 58

NAD 1983 (First Order)

State Plane Zone: Ohio South 3402
 Latitude (dms) N 38 57 37.74272
 Longitude (dms) W 84 16 53.24759
 Easting in meters 445608.640
 Northing in meters 108149.679
 Easting in US survey ft 1461967.680
 Northing in US survey ft 354821.072
 Scale .99996310
 Convergence (dms) -1 7 49.330890

NAVD 1988

Elevation in meters 154.054
 Elevation in feet 505.425
 Geoid Ht. in meters -34.248
 Elevations determined with GPS

Azimuth: S 12' 42" 13" E to Station 58A.