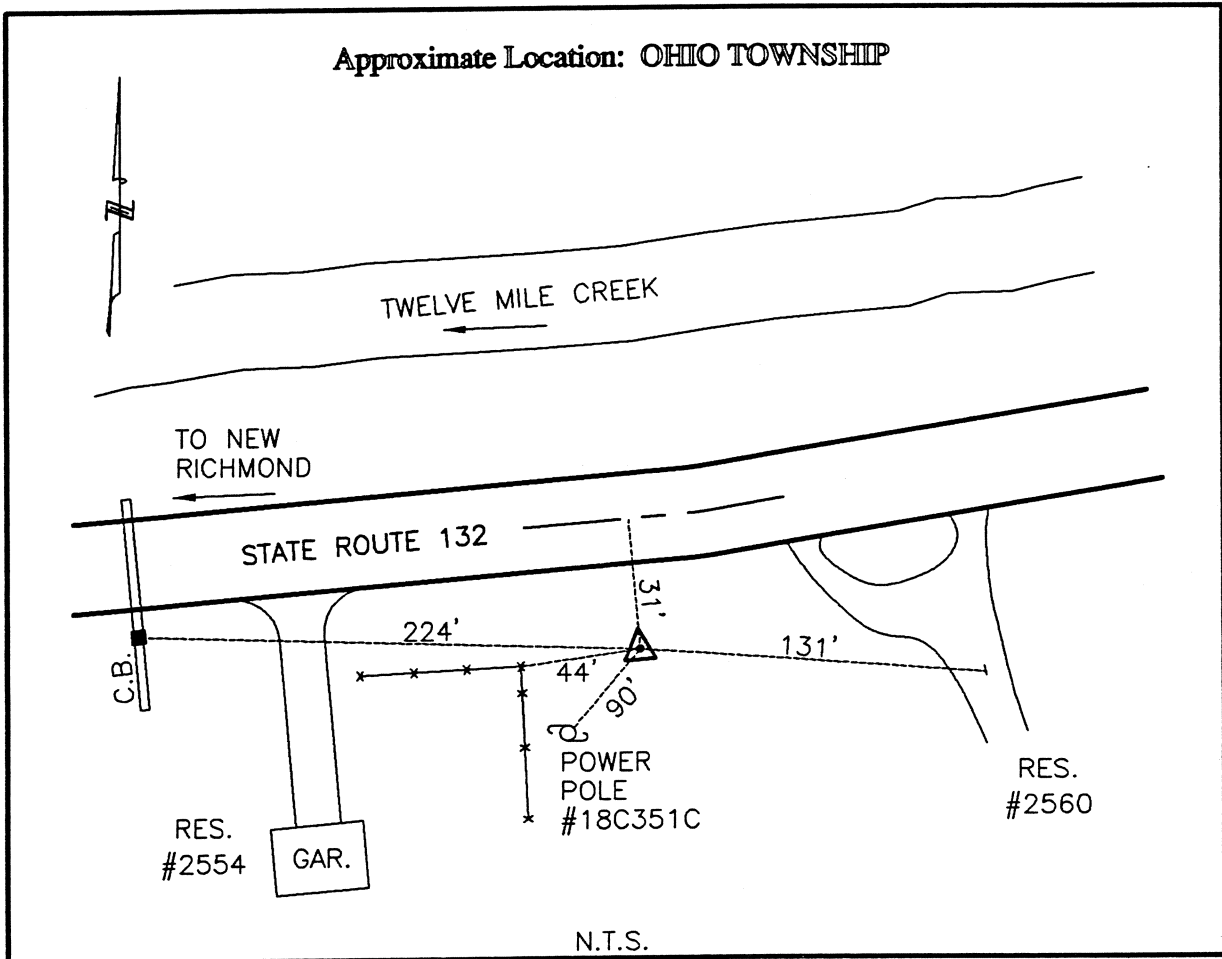




CLERMONT COUNTY ENGINEER

CONTROL STATION DATA SHEET

Approximate Location: OHIO TOWNSHIP



Station Name: 59

NAD 1983 (First Order)

State Plane Zone: Ohio South 3402
 Latitude (dms) N 38 58 3.36135
 Longitude (dms) W 84 15 53.09068
 Easting in meters 447072.100
 Northing in meters 108911.074
 Easting in US survey ft 1466769.048
 Northing in US survey ft 357319.082
 Scale .99996220
 Convergence (dms) -1 7 11.160155

NAVD 1988

Elevation in meters 151.867
 Elevation in feet 498.250
 Geoid Ht. in meters -34.235
 Elevations determined with GPS

Azimuth: S 78° 58' 44" W to Station 59A.