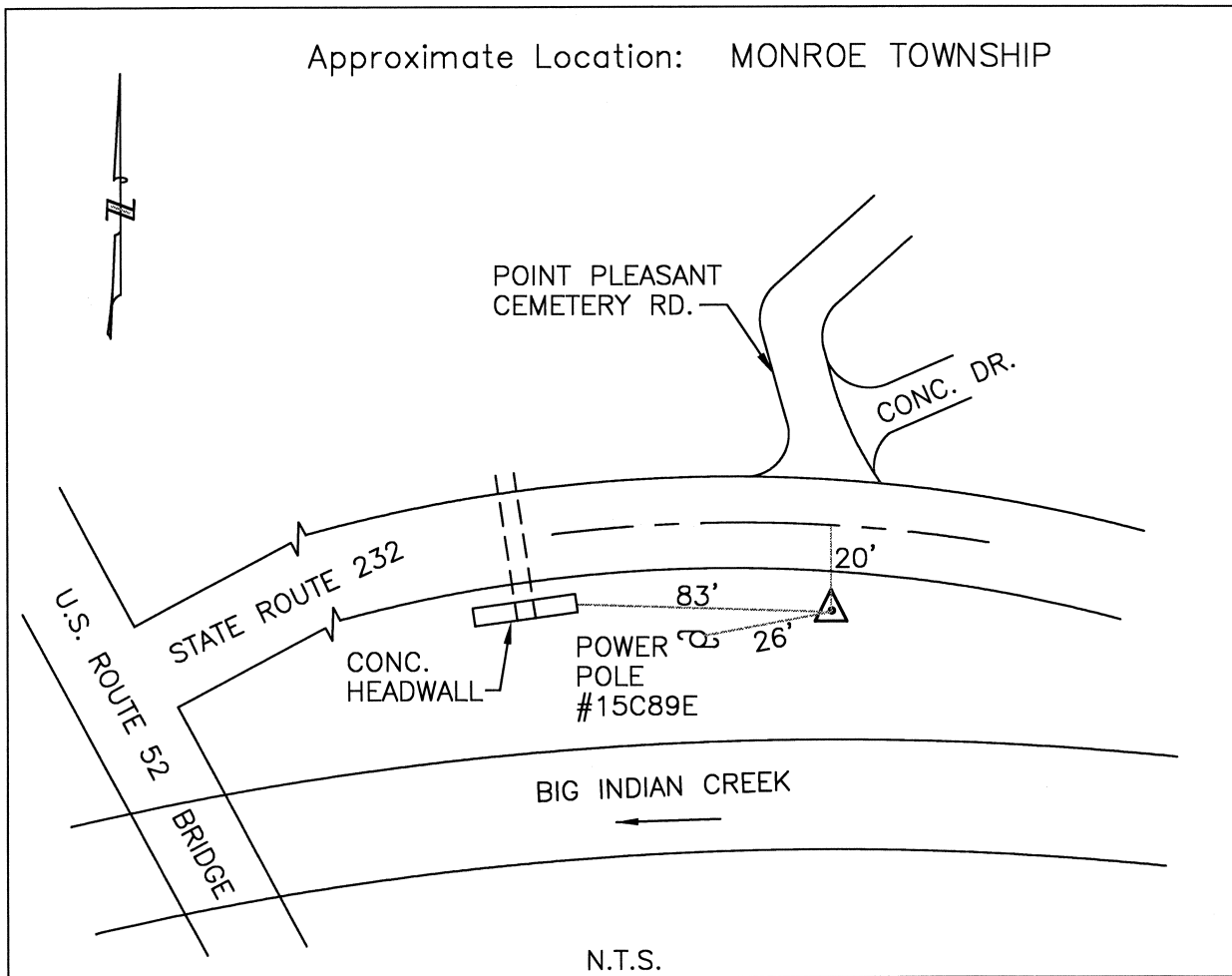




CLERMONT COUNTY ENGINEER CONTROL STATION DATA SHEET

Approximate Location: MONROE TOWNSHIP



Station Name: 66

NAD 1983 (First Order)

State Plane Zone: Ohio South 3402
 Latitude (dms) N 38 53 42.37005
 Longitude (dms) W 84 13 49.00719
 Easting in meters 449904.390
 Northing in meters 100806.754
 Easting in US survey ft 1476061.320
 Northing in US survey ft 330730.159
 Scale .99997210
 Convergence (dms) -1 5 52.426757

NAVD 1988

Elevation in meters 162.712
 Elevation in feet 533.831
 Geoid Ht. in meters -34.234
 Elevations determined with GPS

Azimuth: S.89°09'29"E. to Station 66A