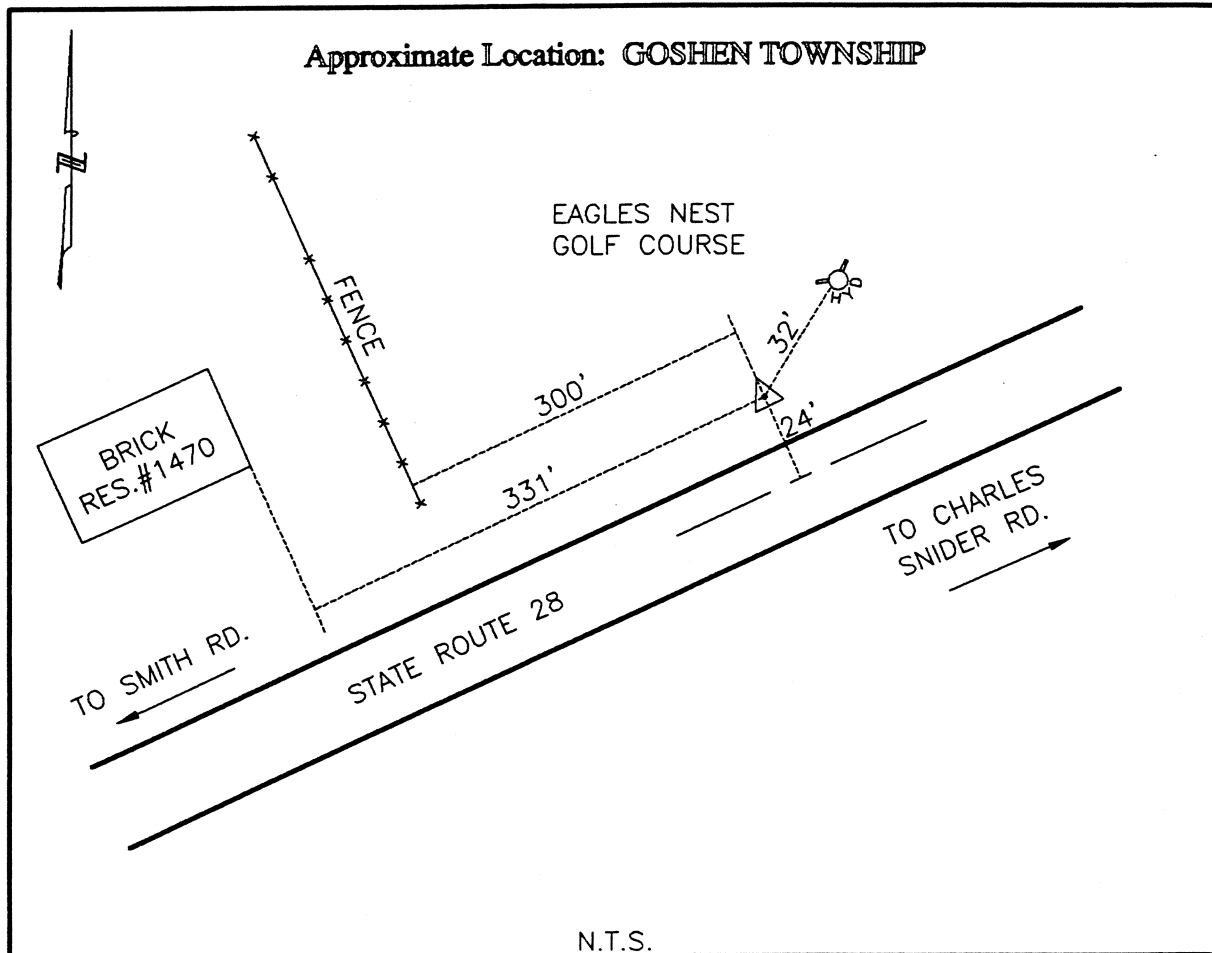




CLERMONT COUNTY ENGINEER  
CONTROL STATION DATA SHEET



Station Name: 75

NAD 1983 (First Order)

State Plane Zone: Ohio South 3402  
 Latitude (dms) N 39 12 55.52628  
 Longitude (dms) W 84 12 0.23338  
 Easting in meters 453194.563  
 Northing in meters 136309.963  
 Easting in US survey ft 1486855.829  
 Northing in US survey ft 447210.270  
 Scale .99994020  
 Convergence (dms) -1 4 43.407649

NAVD 1988

Elevation in meters 264.698  
 Elevation in feet 868.430  
 Geoid Ht. in meters -34.014  
 Elevations determined with GPS

Azimuth: N 53° 57' 00" E to Station 75A.