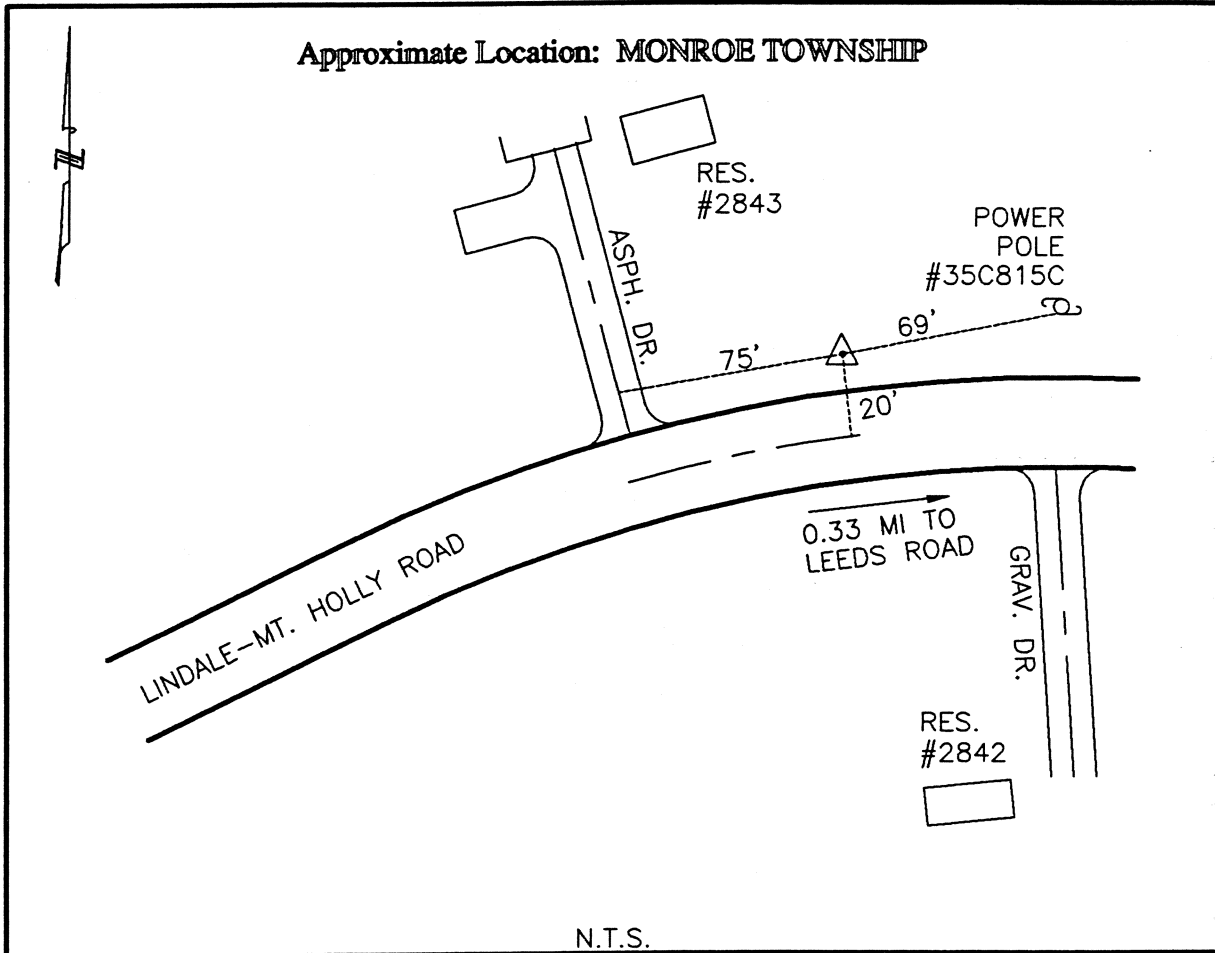




CLERMONT COUNTY ENGINEER  
CONTROL STATION DATA SHEET



Station Name: 81

NAD 1983 (First Order)

State Plane Zone: Ohio South 3402  
 Latitude (dms) N 38 59 37.38630  
 Longitude (dms) W 84 11 40.62718  
 Easting in meters 453202.935  
 Northing in meters 111693.537  
 Easting in US survey ft 1486883.296  
 Northing in US survey ft 366447.879  
 Scale .99995900  
 Convergence (dms) -1 4 30.967132

NAVD 1988

Elevation in meters 273.441  
 Elevation in feet 897.114  
 Geoid Ht. in meters -34.160  
 Elevations determined with GPS

Azimuth: N 80° 47' 53" E to Station 81A.