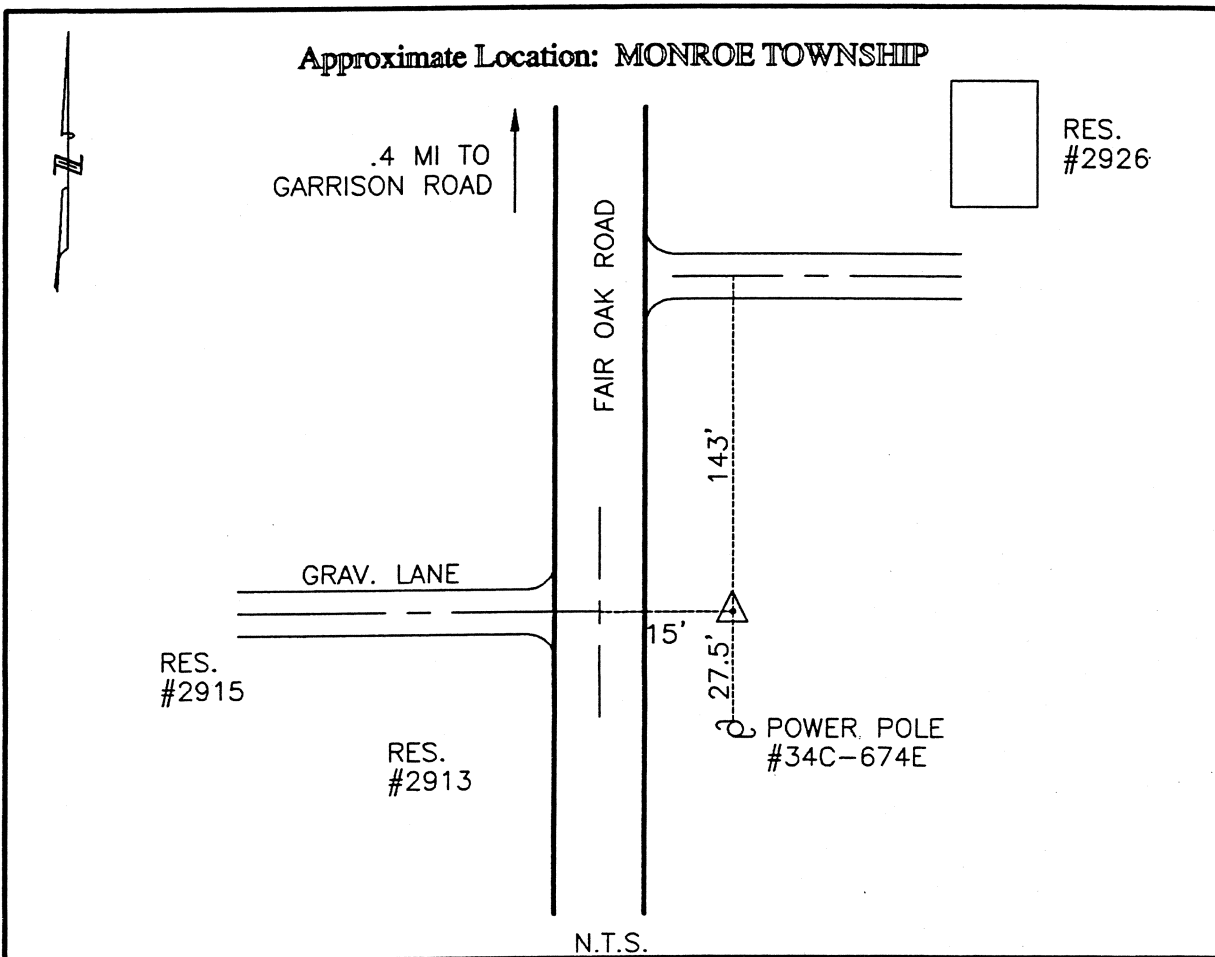




CLERMONT COUNTY ENGINEER

CONTROL STATION DATA SHEET



Station Name: 86

NAD 1983 (First Order)

State Plane Zone: Ohio South 3402
 Latitude (dms) N 38 58 57.87231
 Longitude (dms) W 84 10 31.53437
 Easting in meters 454842.691
 Northing in meters 110444.256
 Easting in US survey ft 1492263.062
 Northing in US survey ft 362349.197
 Scale .99996030
 Convergence (dms) -1 3 47.126395

NAVD 1988

Elevation in meters 273.007
 Elevation in feet 895.690
 Geoid Ht. in meters -34.142
 Elevations determined with GPS

Azimuth: N 04° 23' 48" E to Station 86A.