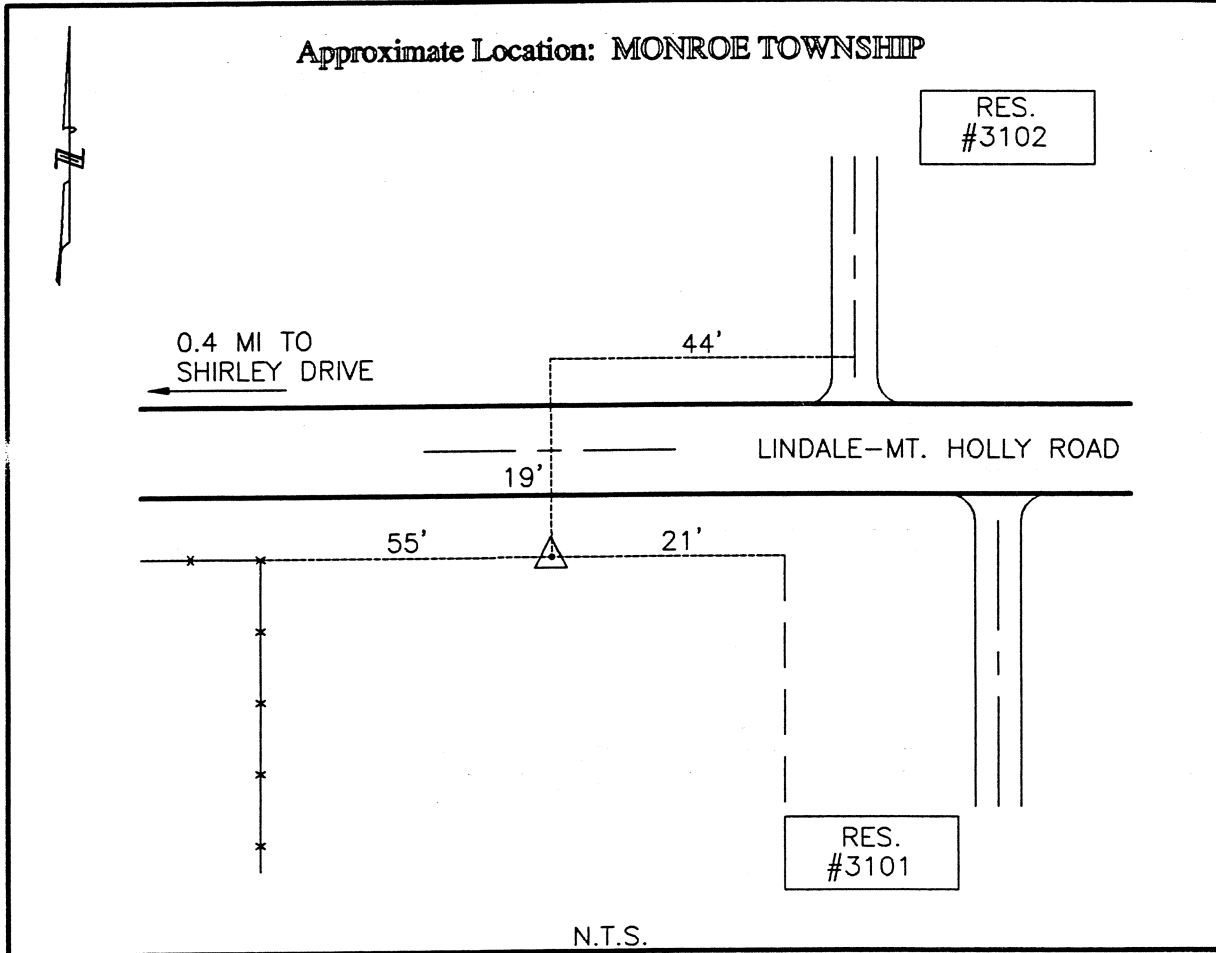




CLERMONT COUNTY ENGINEER  
CONTROL STATION DATA SHEET



Station Name: 87

NAD 1983 (First Order)

State Plane Zone: Ohio South 3402  
 Latitude (dms) N 39 00 4.49402  
 Longitude (dms) W 84 10 36.47210  
 Easting in meters 454762.017  
 Northing in meters 112500.476  
 Easting in US survey ft 1491998.384  
 Northing in US survey ft 369095.312  
 Scale .99995820  
 Convergence (dms) -1 3 50.259481

NAVD 1988

Elevation in meters 263.124  
 Elevation in feet 863.266  
 Geoid Ht. in meters -34.138  
 Elevations determined with GPS

Azimuth: S 86° 14' 23" E to Station 87A.