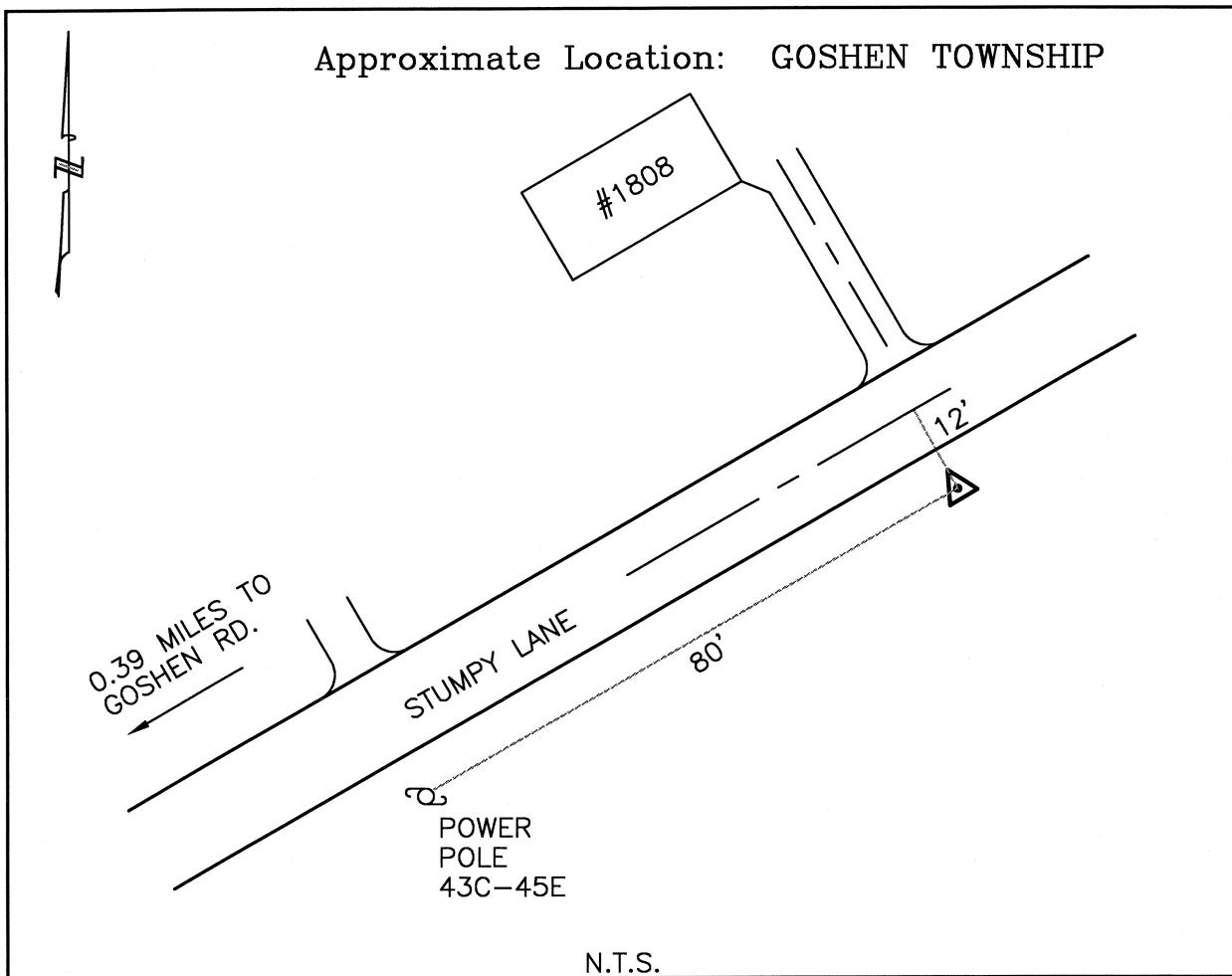




CLERMONT COUNTY ENGINEER

CONTROL STATION DATA SHEET



Station Name: 95

NAD 1983 (First Order)

State Plane Zone: Ohio South 3402
 Latitude (dms) N 39 15 24.97278
 Longitude (dms) W 84 09 57.39029
 Easting in meters 456225.869
 Northing in meters 140862.742
 Easting in US survey ft 1496801.039
 Northing in US survey ft 462147.179
 Scale .99993840
 Convergence (dms) -1 3 25.461309

NAVD 1988

Elevation in meters 255.349
 Elevation in feet 837.758
 Geoid Ht. in meters -33.921
 Elevations determined with GPS

Azimuth: S 52° 33' 31" W to Station 95A.