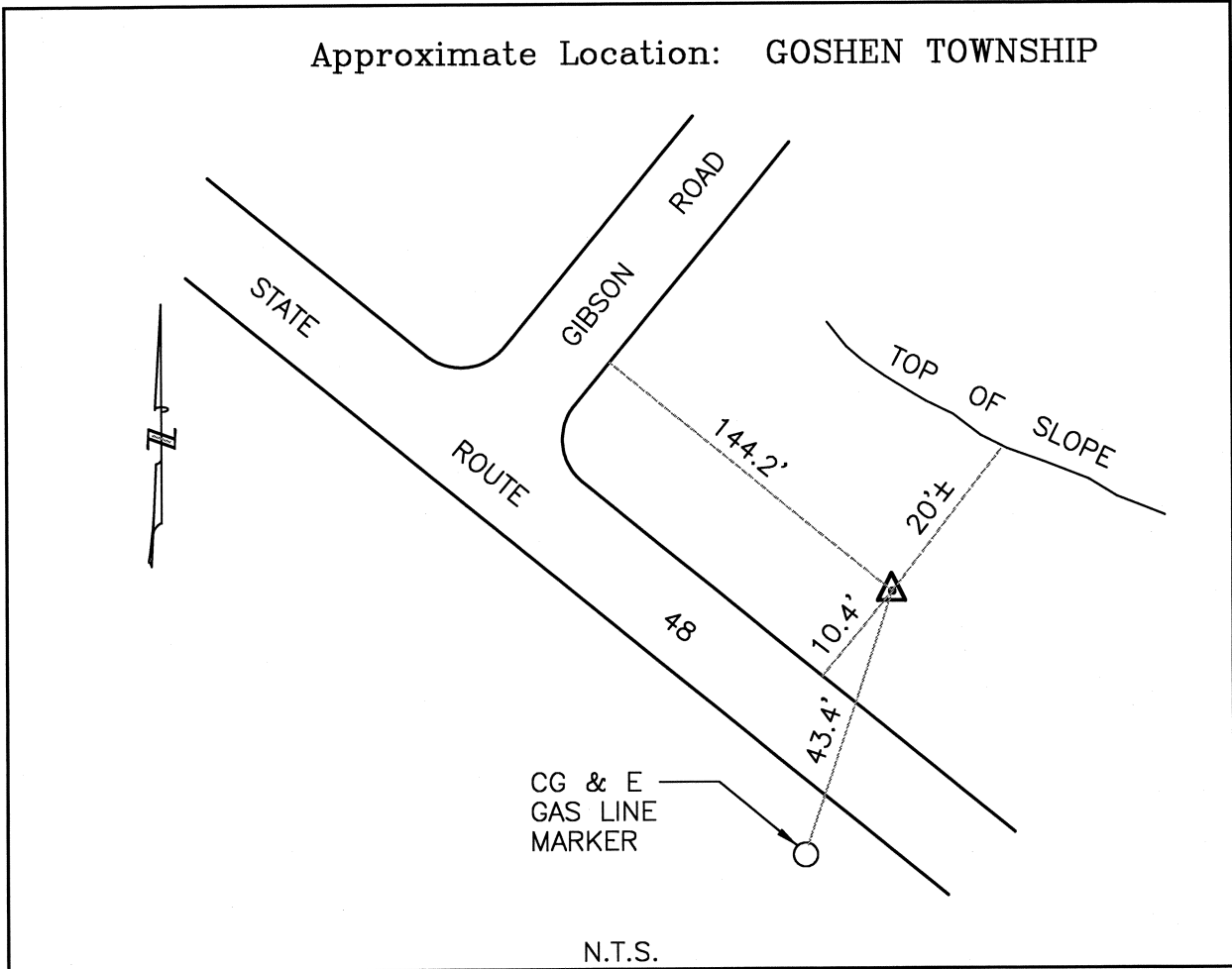




CLERMONT COUNTY ENGINEER CONTROL STATION DATA SHEET

Approximate Location: GOSHEN TOWNSHIP



Station Name: G022

NAD 1983 (First Order)

State Plane Zone: Ohio South 3402
 Latitude (dms) N 39 14 8.02885
 Longitude (dms) W 84 12 41.83665
 Easting in meters 452239.125
 Northing in meters 138564.174
 Easting in US survey ft 1483721.196
 Northing in US survey ft 454605.961
 Scale .99993930
 Convergence (dms) -1 5 9.805737

NAVD 1988

Elevation in meters 246.247
 Elevation in feet 807.895
 Geoid Ht. in meters -34.005
 Elevations determined with GPS

Azimuth: S 63° 06' 51" E to Station 22A.