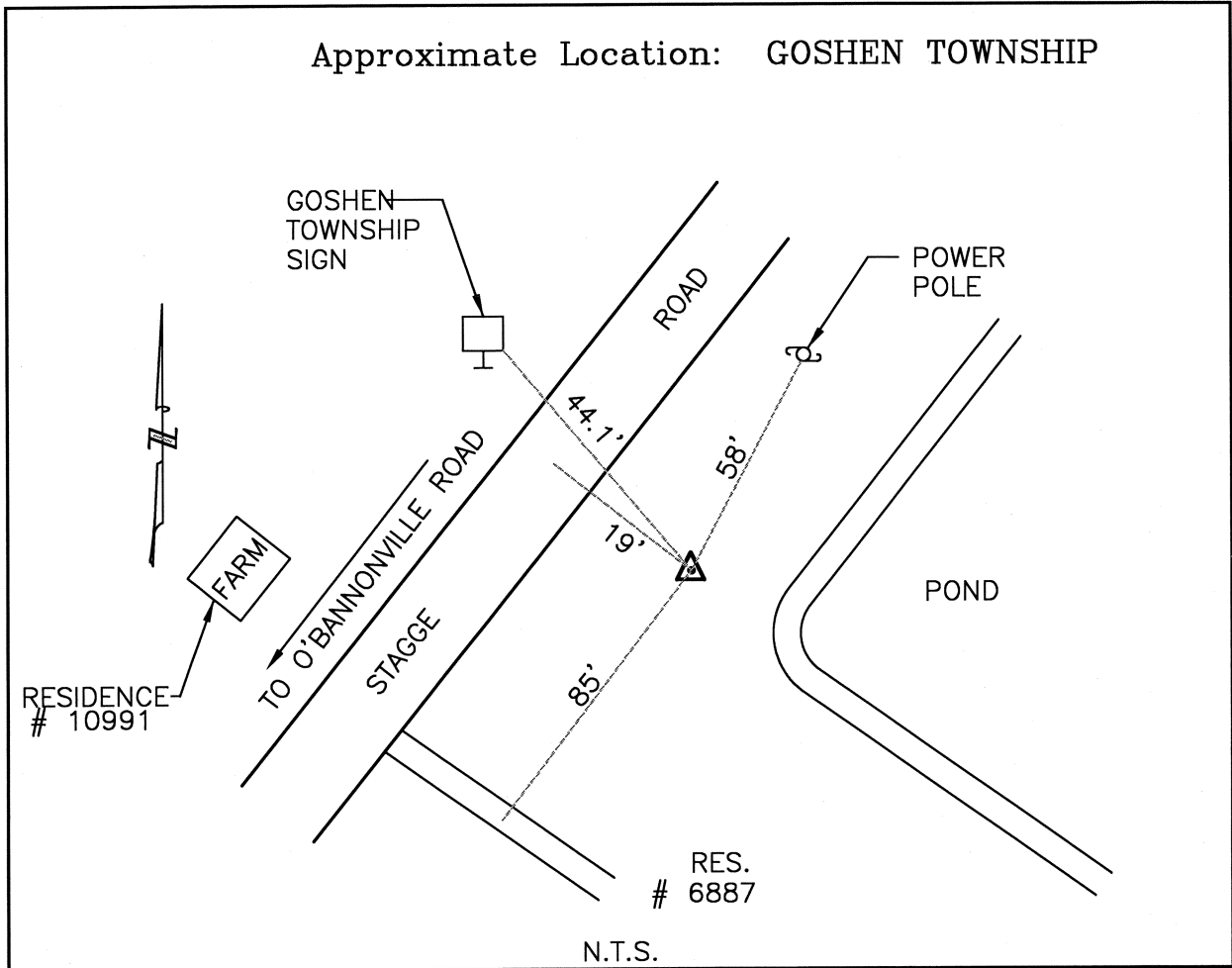




CLERMONT COUNTY ENGINEER CONTROL STATION DATA SHEET

Approximate Location: GOSHEN TOWNSHIP



Station Name: G024

NAD 1983 (First Order)

State Plane Zone: Ohio South 3402
 Latitude (dms) N 39 16 6.19272
 Longitude (dms) W 84 13 7.84889
 Easting in meters 451684.784
 Northing in meters 142219.190
 Easting in US survey ft 1481902.496
 Northing in US survey ft 466597.459
 Scale .99993800
 Convergence (dms) -1 5 26.311011

NAVD 1988

Elevation in meters 227.127
 Elevation in feet 745.166
 Geoid Ht. in meters -33.970
 Elevations determined with GPS

Azimuth: N 30° 32' 21" E to Station G024A.