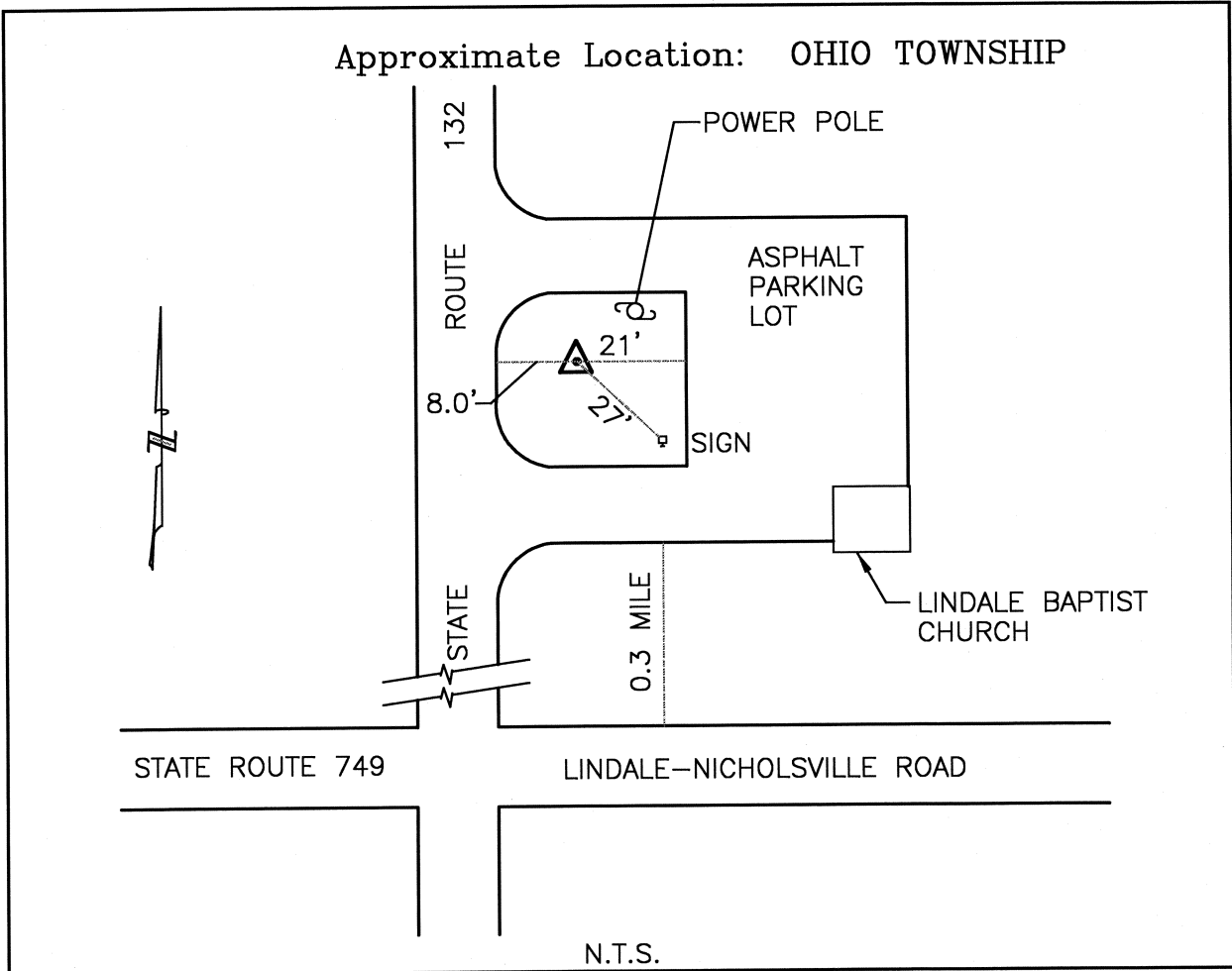




# CLERMONT COUNTY ENGINEER CONTROL STATION DATA SHEET

Approximate Location: OHIO TOWNSHIP



Station Name: OH05

NAD 1983 (First Order)

State Plane Zone: Ohio South 3402  
 Latitude (dms) N 38 59 43.94740  
 Longitude (dms) W 84 12 35.38316  
 Easting in meters 451889.350  
 Northing in meters 111920.658  
 Easting in US survey ft 1482573.642  
 Northing in US survey ft 367193.025  
 Scale .99995880  
 Convergence (dms) -1 5 5.710871

NAVD 1988

Elevation in meters 268.693  
 Elevation in feet 881.537  
 Geoid Ht. in meters -34.175  
 Elevations determined with GPS

Azimuth: S 10° 43' 50" W to Station OH05A.