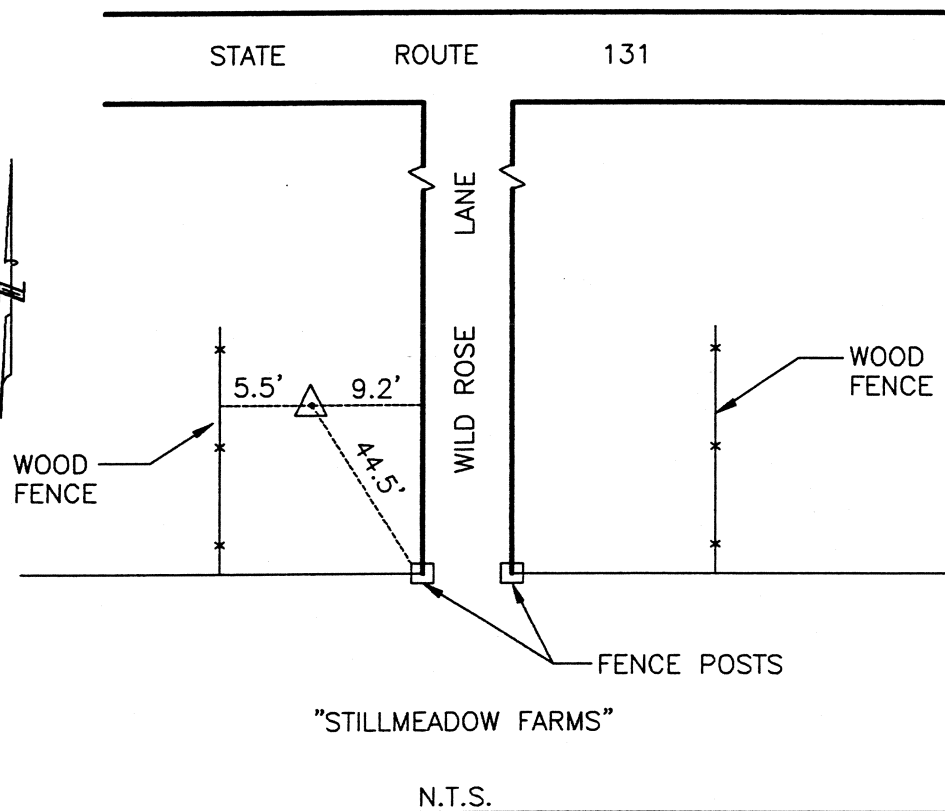




CLERMONT COUNTY ENGINEER
CONTROL STATION DATA SHEET

Approximate Location: STONELICK TOWNSHIP



Station Name: ST15

NAD 1983 (First Order)

State Plane Zone: Ohio South 3402
 Latitude (dms) N 39 09 42.22893
 Longitude (dms) W 84 10 55.13186
 Easting in meters 454644.942
 Northing in meters 130321.074
 Easting in US survey ft 1491614.281
 Northing in US survey ft 427561.724
 Scale .99994340
 Convergence (dms) -1 4 2.099463

NAVD 1988

Elevation in meters 257.165
 Elevation in feet 843.716
 Geoid Ht. in meters -34.059
 Elevations determined with GPS

Azimuth: N 04° 30' 20" E to Station ST15A.