



## CLERMONT COUNTY ENGINEER'S OFFICE

*"Improving your commute"*

Patrick J. Manger, P.E.-P.S.  
Clermont County Engineer

January 10, 2019

Board of County Commissioners  
101 East Main Street  
Batavia, Ohio 45103

RE: Swings Corner Pt. Isabel Road Culvert Replacement-CC119  
Tate Township

Dear Commissioners:

Pursuant to Section 5543.17 of the Ohio Revised Code, I have determined that a road closure is necessary for the Culvert replacement on Swings Corner-Pt Isabel Road and that it is impractical to construct a temporary highway/culvert and that a temporary detour is required.

Therefore, I have scheduled a road closure on Swings Corner Pt. Isabel Road. The closure is located between address 2483 and 2489 Swings Corner-Pt. Isabel Road. **The road will be closed to through traffic from 7AM to 5PM on Tuesday 1-15-2019 through Wednesday 1-16-2019.** The length of detour is approximately 5.26 miles or 27,749 feet.

The Office of the Clermont County Engineer shall notify the Communication Center and other affected agencies. All advanced warning and detour signs will be erected and maintained for this project. **Attached is the recommended detour.**

If I can provide any additional information, please call the Clermont County Engineers Office at (513)732-8857.

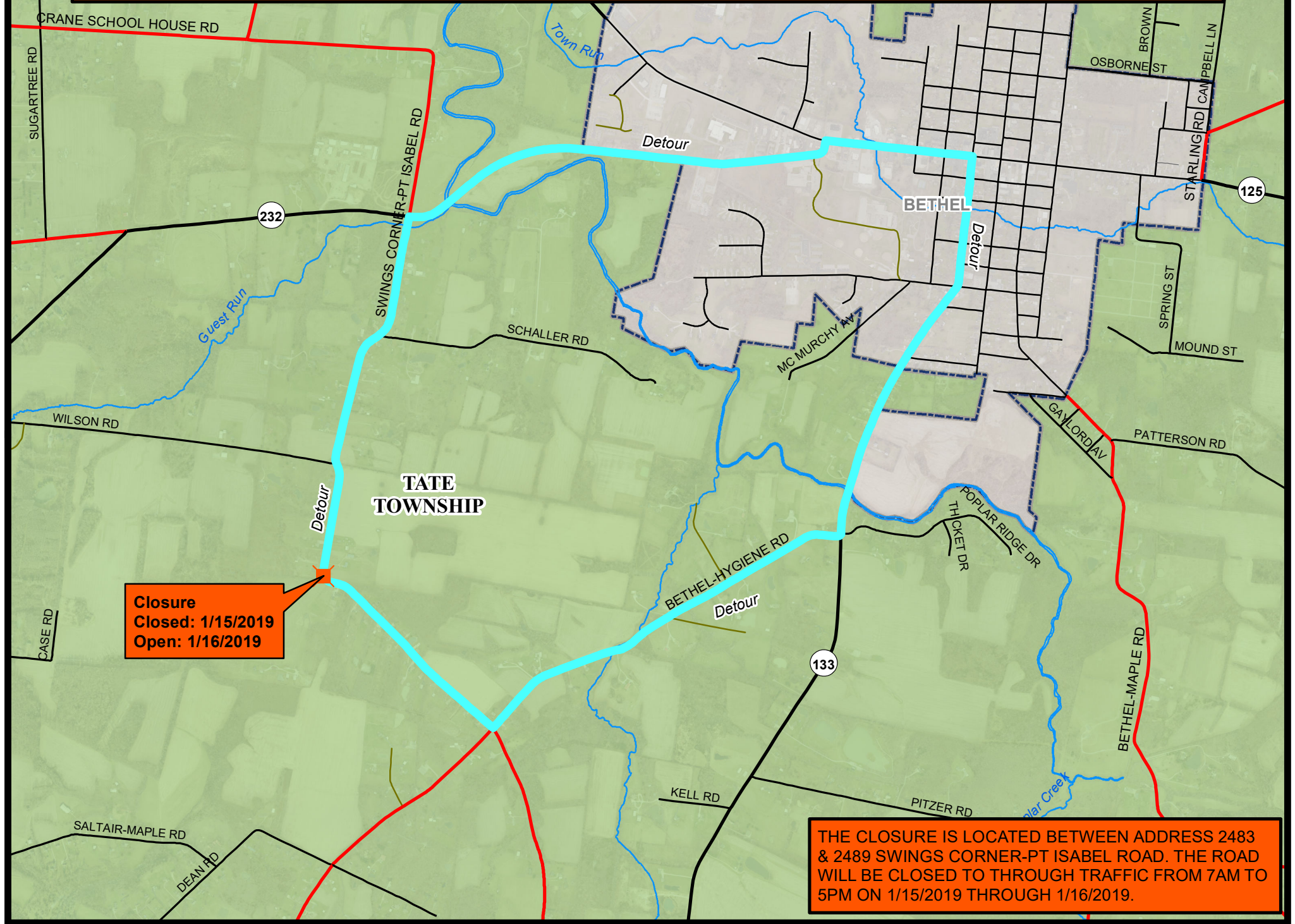
Sincerely,

Patrick Manger, P.E., P.S.  
Clermont County Engineer

PM:jm

cc: Communication Center  
Tate Township  
Tate Township Fire/EMS  
Bethel-Tate Schools  
BCC  
CTC  
Sheriff  
State Patrol  
CCEO Staff  
Hwy Ops Staff  
CC Office of Public Information

# Swings Corner-Pt. Isabel Road Culvert Replacement Detour Map



**Closure**  
Closed: 1/15/2019  
Open: 1/16/2019

THE CLOSURE IS LOCATED BETWEEN ADDRESS 2483 & 2489 SWINGS CORNER-PT ISABEL ROAD. THE ROAD WILL BE CLOSED TO THROUGH TRAFFIC FROM 7AM TO 5PM ON 1/15/2019 THROUGH 1/16/2019.