



CLERMONT COUNTY ENGINEER'S OFFICE

Jeremy Evans, P.E., P.S.
Clermont County Engineer

January 13, 2023

Board of County Commissioners
101 East Main Street
Batavia, OH 45103

RE: Ninemile-Tobasco Road Sanitary Sewer Main Project Detour
Pierce Township

Dear Commissioners:

Pursuant to Section 5543.17 of the Ohio Revised Code, I have determined that a road closure is necessary on Ninemile-Tobasco Road, as it is impractical to construct a temporary highway, culvert or bridge. The Clermont County Water Resource Department is requesting the closure so that their contractor can install a new Sanitary Sewer Main along Ninemile-Tobasco Road.

The closure is located between address 3504 and 3598 Ninemile-Tobasco Road. **The road will be closed to through traffic on Monday, January 23, 2023 through Friday March 24, 2023.** The length of the detour is approximately 6.68 miles or 35,257 feet.

The Office of the Clermont County Engineer shall notify the Communication Center and other affected agencies. Local traffic will be maintained inside the closure area. Our crew will install the advanced notice and detour signs for the closure and the contractor will install and maintain the barricades and closure signs at the site. **Attached is the recommended detour.**

If you have questions or need additional information, please contact Amanda Beiting in the Clermont County Engineer's Office at (513) 732-8857.

Sincerely,

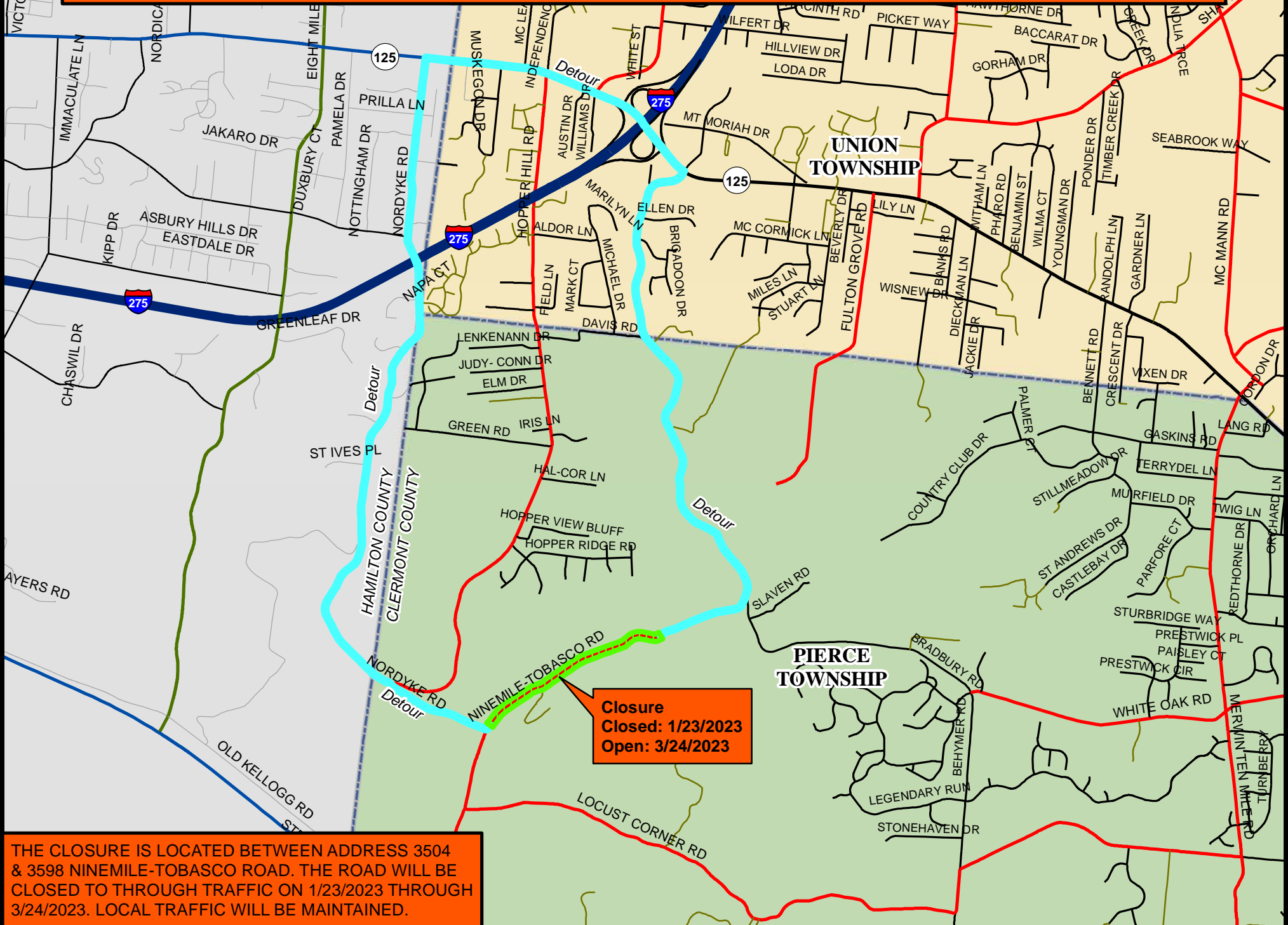
A handwritten signature in blue ink, appearing to read "Jeremy P. Evans".

Jeremy P. Evans, P.E., P.S.
Clermont County Engineer

JE:sw

cc: Communication Center
Pierce Township
Pierce Township Fire/EMS
New Richmond Schools
BCC
CTC
Sheriff
State Highway Patrol
CCEO Staff
Hwy Ops Staff
CC Office of Public Information

Ninemile-Tobasco Road Sanitary Sewer Main Project Detour Map



Closure
Closed: 1/23/2023
Open: 3/24/2023

THE CLOSURE IS LOCATED BETWEEN ADDRESS 3504 & 3598 NINEMILE-TOBASCO ROAD. THE ROAD WILL BE CLOSED TO THROUGH TRAFFIC ON 1/23/2023 THROUGH 3/24/2023. LOCAL TRAFFIC WILL BE MAINTAINED.