



## CLERMONT COUNTY ENGINEER'S OFFICE

Jeremy Evans, P.E., P.S.  
Clermont County Engineer

February 28, 2025

Board of County Commissioners  
101 East Main Street  
Batavia, OH 45103

RE: Bradbury Road Utility Installation Detour  
Pierce Township

Dear Commissioners:

Pursuant to Section 5543.17 of the Ohio Revised Code, I have determined that a road closure is necessary on Bradbury Road, as it is impractical to construct a temporary highway, culvert, or bridge. The closure is necessary for the contractor to install a transmission main on Bradbury Road.

The closure is located between Ninemile-Tobasco Road and Slaven Road on Bradbury Road. **The road will be closed to through traffic starting Monday, March 10, 2025 through Friday, March 21, 2025.** The length of the detour is approximately 5.50 miles or 29,017 feet.

The Office of the Clermont County Engineer shall notify the Communication Center and other affected agencies. The contractor will maintain the detour signs throughout the project. **Attached is the recommended detour.**

If you have questions or need additional information, please contact Eric Ely at 513-732-8857.

Sincerely,

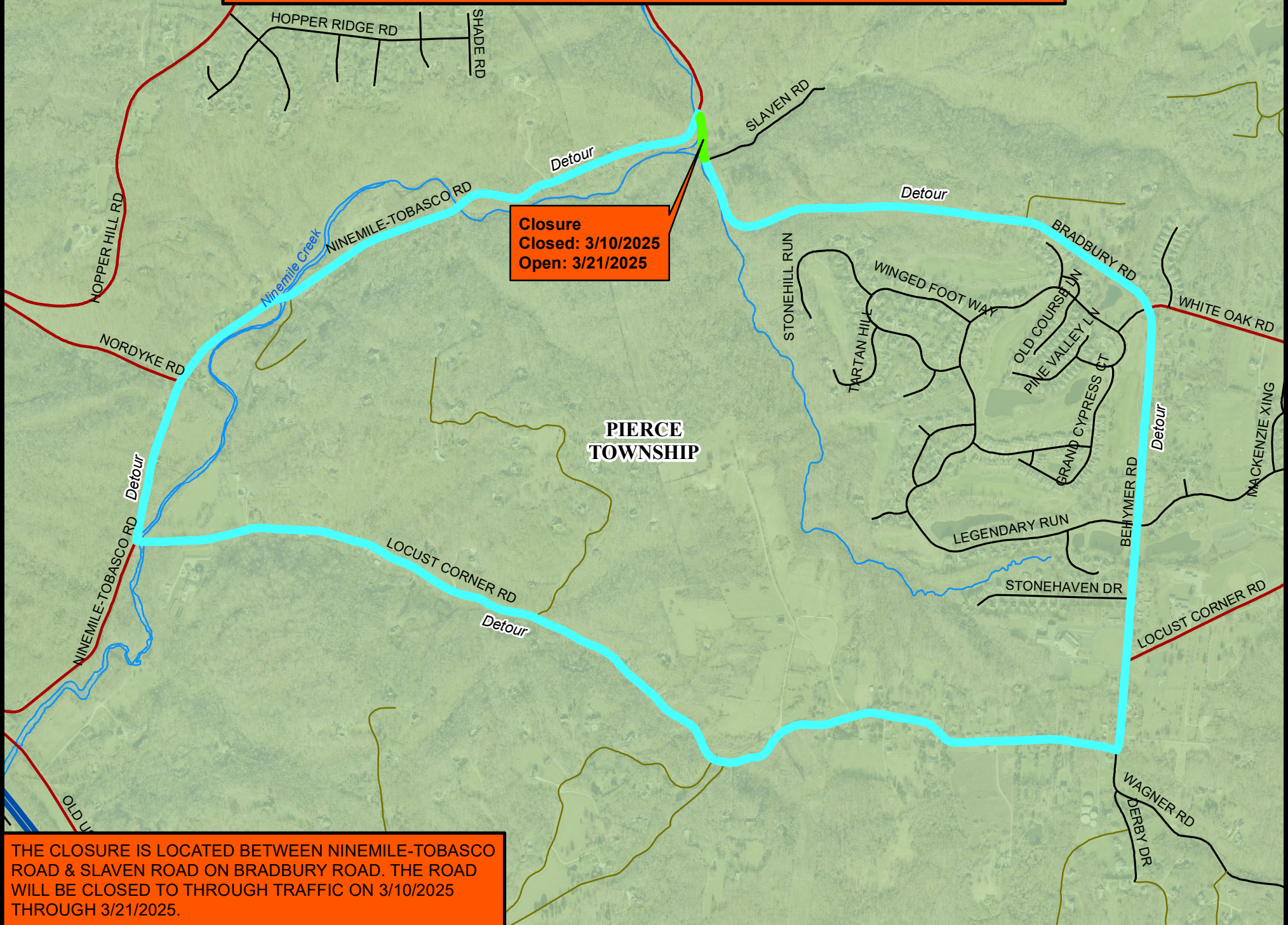
A handwritten signature in blue ink, appearing to read "Jeremy P. Evans".

Jeremy P. Evans, P.E., P.S.  
Clermont County Engineer

JPE: sw

cc: Communication Center  
Pierce Township  
Pierce Township Fire/EMS  
New Richmond Schools  
BCC  
CTC  
Sheriff  
State Highway Patrol  
CCEO Staff  
Hwy Ops Staff  
CC Office of Public Information

# Bradbury Road Utility Installation Detour Map



THE CLOSURE IS LOCATED BETWEEN NINEMILE-TOBASCO ROAD & SLAVEN ROAD ON BRADBURY ROAD. THE ROAD WILL BE CLOSED TO THROUGH TRAFFIC ON 3/10/2025 THROUGH 3/21/2025.