



CLERMONT COUNTY ENGINEER'S OFFICE

Jeremy Evans, P.E., P.S.
Clermont County Engineer

March 12, 2025

Board of County Commissioners
101 East Main Street
Batavia, OH 45103

RE: Laurel-Pt. Isabel Road Utility Work Detour
Washington Township

Dear Commissioners:

Pursuant to Section 5543.17 of the Ohio Revised Code, I have determined that a road closure is necessary on Laurel-Pt. Isabel Road, as it is impractical to construct a temporary highway, culvert, or bridge. The closure is necessary for Duke Energy to complete their scheduled utility upgrades on Laurel-Pt. Isabel Road.

The closure is located between address 2375 and 2394 Laurel-Pt. Isabel Road. **The road will be closed to through traffic from 8AM to 4PM on Tuesday, April 8, 2025.** The length of the detour is approximately 9.67 miles or 51,073 feet.

The Office of the Clermont County Engineer shall notify the Communication Center and other affected agencies. All advanced warning and detour signs will be erected and maintained for this project. Our crews will maintain the advanced warning signs. The contractor will maintain all other detour signs. **Attached is the recommended detour.**

If you have questions or need additional information, please contact Amanda Beiting at 513-732-8857.

Sincerely,

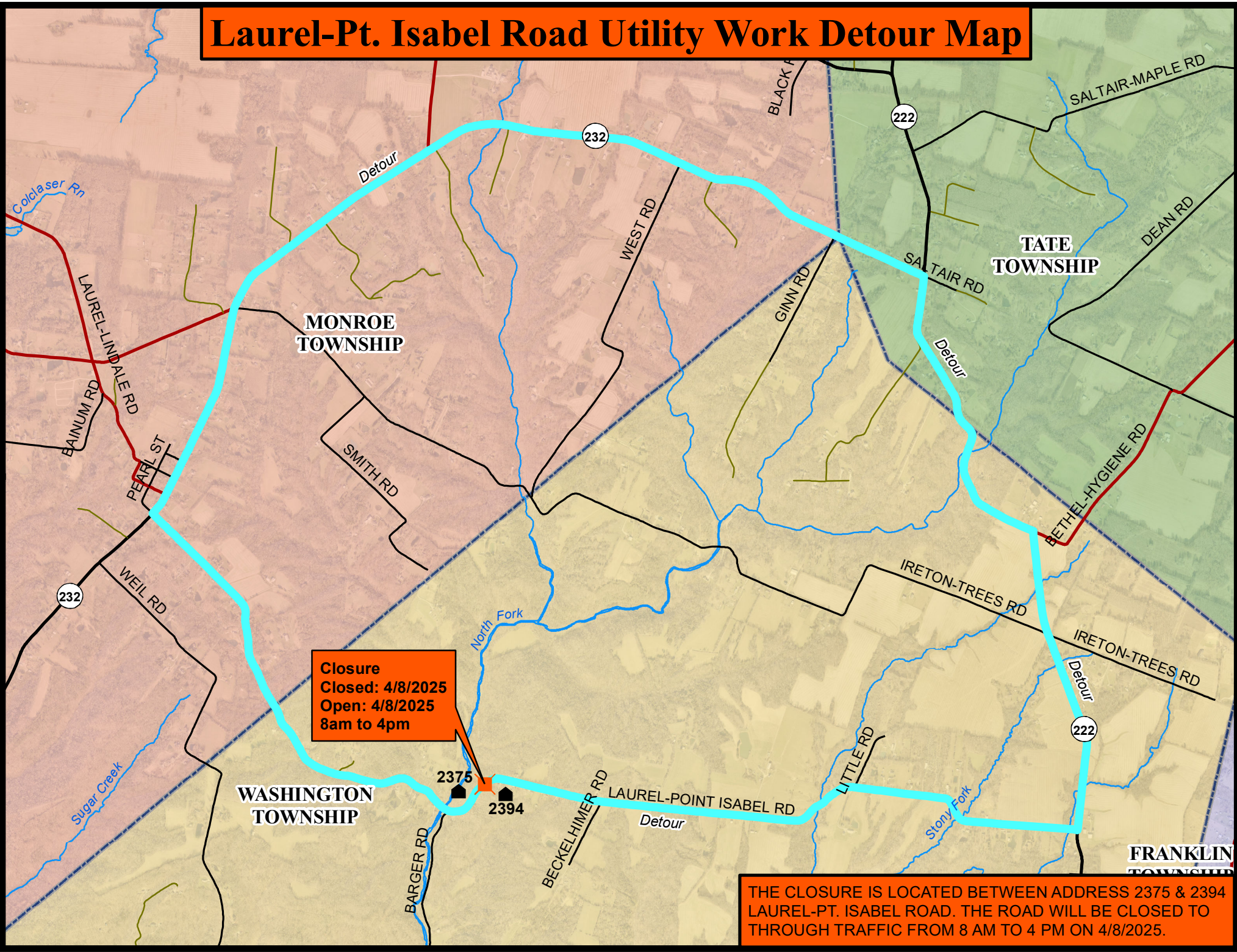
A handwritten signature in blue ink, appearing to read "Jeremy P. Evans".

Jeremy P. Evans, P.E., P.S.
Clermont County Engineer

JPE: sw

cc: Communication Center
Washington Township
Washington Township Fire/EMS
New Richmond Schools
Felicity Schools
BCC
CTC
Sheriff
State Highway Patrol
CCEO Staff
Hwy Ops Staff
CC Office of Public Information

Laurel-Pt. Isabel Road Utility Work Detour Map



Closure
Closed: 4/8/2025
Open: 4/8/2025
8am to 4pm

THE CLOSURE IS LOCATED BETWEEN ADDRESS 2375 & 2394 LAUREL-PT. ISABEL ROAD. THE ROAD WILL BE CLOSED TO THROUGH TRAFFIC FROM 8 AM TO 4 PM ON 4/8/2025.