



CLERMONT COUNTY ENGINEER'S OFFICE

Jeremy Evans, P.E., P.S.
Clermont County Engineer

April 3, 2025

Board of County Commissioners
101 East Main Street
Batavia, OH 45103

RE: Maple Creek Road Bridge No. T21-0.43 Maintenance Detour
Washington Township

Dear Commissioners:

Pursuant to Section 5543.17 of the Ohio Revised Code, it has been determined that a road closure is necessary on Maple Creek Road, as it is impractical to construct a temporary highway, culvert, or bridge. The closure is necessary so that our contractor can perform bridge maintenance.

The closure is located between 508 and 511 Maple Creek Road. **The road will be closed to through traffic from 8AM to 5PM on Thursday, April 17, 2025.** The length of the detour is approximately 7.53 miles or 39,756 feet.

The Office of the Clermont County Engineer shall notify the Communication Center and other affected agencies. All advanced warning and detour signs will be erected and maintained for this project. Our crew will maintain the advanced warning signs. The contractor will manage all other detour signage. **Attached is the recommended detour.**

If you have questions or need additional information, please contact Jon Carpenter at 513-732-8857.

Sincerely,

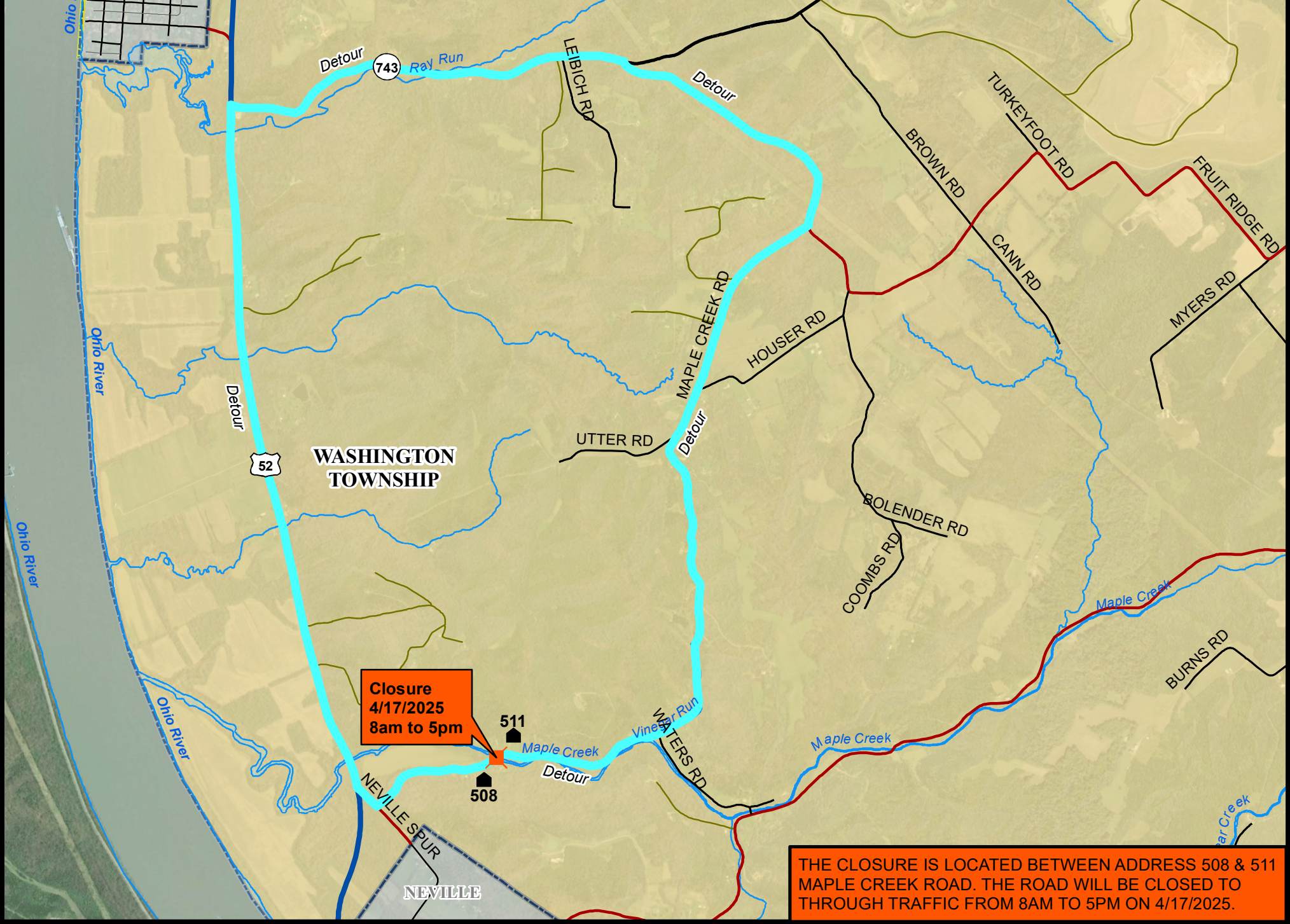
A handwritten signature in black ink, appearing to read "Sukie M. Scheetz".

Sukie M. Scheetz
Senior Administrator

SMS: sw

cc: Communication Center
Washington Township
Washington Township Fire/EMS
Felicity Schools
New Richmond Schools
BCC
CTC
Sheriff
State Highway Patrol
CCEO Staff
Hwy Ops Staff
CC Office of Public Information

Maple Creek Road Bridge No. T21-0.43 Maintenance Detour



Closure
4/17/2025
8am to 5pm

THE CLOSURE IS LOCATED BETWEEN ADDRESS 508 & 511 MAPLE CREEK ROAD. THE ROAD WILL BE CLOSED TO THROUGH TRAFFIC FROM 8AM TO 5PM ON 4/17/2025.